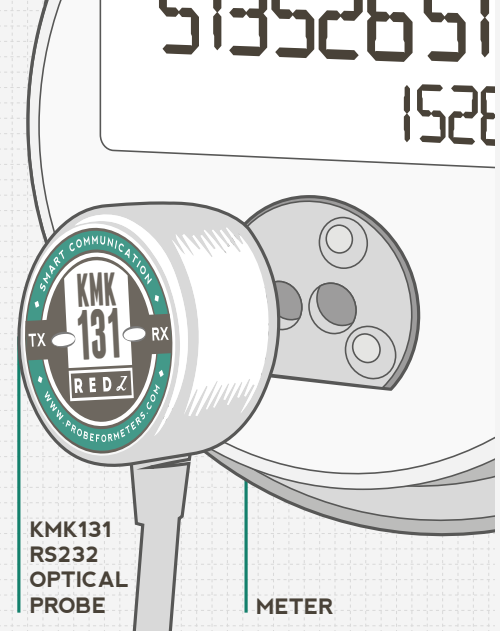


# KMK 131

REDZ KMK131 optical probe is designed in ANSI C12.18 Type 2 standard and it is compatible with all brands and types of ANSI meters. The probe has DB9 Female interface for RS232 connection thus it can easily be used with handheld units with suitable interface and/or data collector devices.

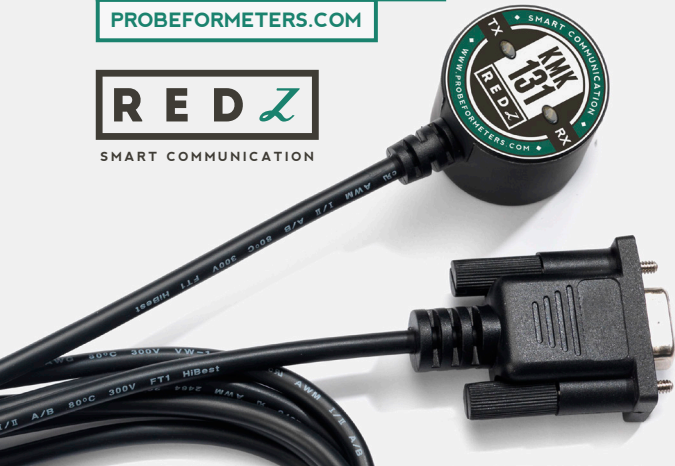


## RS232 OPTICAL PROBE

[INFO@PROBEFORMETERS.COM](mailto:INFO@PROBEFORMETERS.COM)

[PROBEFORMETERS.COM](http://PROBEFORMETERS.COM)

**REDZ**  
SMART COMMUNICATION



### MECHANICAL SPECIFICATIONS

Diameter:	32 mm
Height:	32 mm
Magnetic Force:	N38
Body and Back Cover Material:	ABS
Transparent Parts:	Transparent Poly Carbonate
Weight:	~ 125 gr

### ELECTRICAL SPECIFICATIONS

Standard:	ANSI C12.18 Type 2
Cable Length:	3 m
Data Communication Speed:	Max 19200 baud
Operating Voltage:	3,3 V (Passive port powered by DTR and / or RTS signals)
Electrical Interface	RS232 DB9F
Wavelength:	~ 900 nm